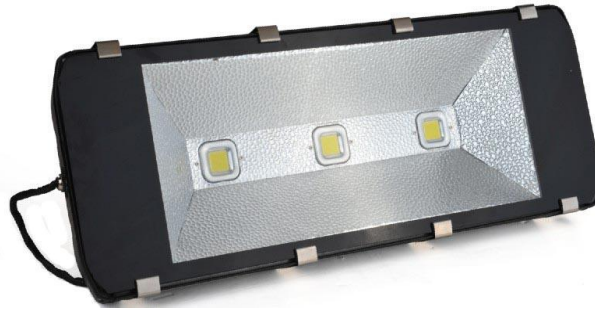


**LITETRON®**

## LED Flood Light 210W



### Specification

Input Voltage	100-277VAC 50/60Hz	
LED Light Source	1PCS High Power Integrated Epistar LED	
Power	210W	
Led Luminous Efficiency	90-120LM/W	
Led Initial Luminous Flux	> 17,850LM	
Illuminance Uniformity	>0.6	
Color Temperature	6,000-6,500K(daylight)	
PF	>0.9	
Color Rendering Index	Ra>75	
Beam Angle	120°	
LED Junction Temperature	≤80 (@ Ta=25 )	
Working Temperature	-25 ~ 55	
Storage Temperature	-25 ~ +65	
Net weight	15Kg	
Life-span	>50,000H	
Connecting Wire	Brown/Black	L Live
	Blue/White	N Neutral
	Yellow/Green	G Earth
Light Fixture Color	<input type="checkbox"/> Black <input type="checkbox"/> White <input type="checkbox"/> Gray <input type="checkbox"/> Bronze	